



## Single Row Docking Station Connectors

- 10 contacts
- 2.5 Amps per contact
- 0.083 [2.10] spacing
- 0.018 [0.45] diameter pins
- Pins recessed for protection

### General Specifications

<b>Number of Contacts</b>	10
<b>Contact Diameter</b>	0.018 [0.45]
<b>Current Rating</b>	2.5 Amps per contact
<b>Contact Resistance</b>	< 8 milliohms per contact
<b>Extraction Force</b>	0.3 – 2.0 oz. per contact
<b>Contact Life Cycles</b>	100,000
<b>Breakdown Voltage Between Contacts</b>	> 1200V RMS
<b>Dielectric Withstanding Voltage</b>	1000V RMS
<b>Temperature Rating</b>	-55° C to 85° C
<b>Insulation Resistance</b>	> 10 <sup>3</sup> Megohms at 500 VDC
<b>Insulator Material</b>	Nylon
<b>Pins</b>	Material: Phosphor bronze Plating: Gold over nickel
<b>Sockets</b>	Material: Brass bodies/beryllium copper contact wires Plating: Gold over nickel

### Plating Reference

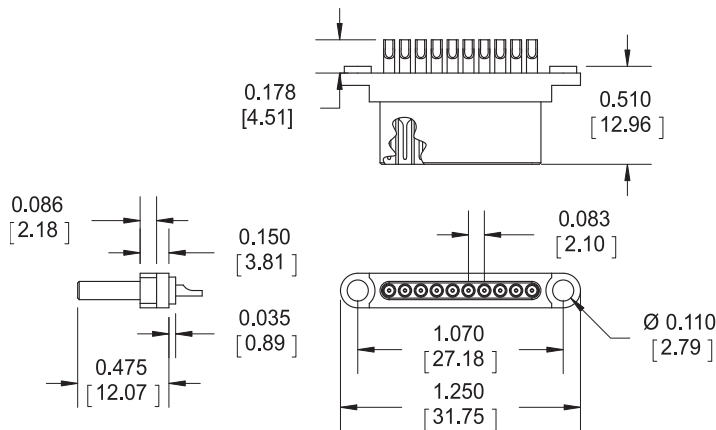
Male Pins (T):	10µin gold (min) over nickel
Female Sockets (TABH):	50µin gold (min) over nickel on mating surface, tin lead over nickel on termination

### Ordering Information

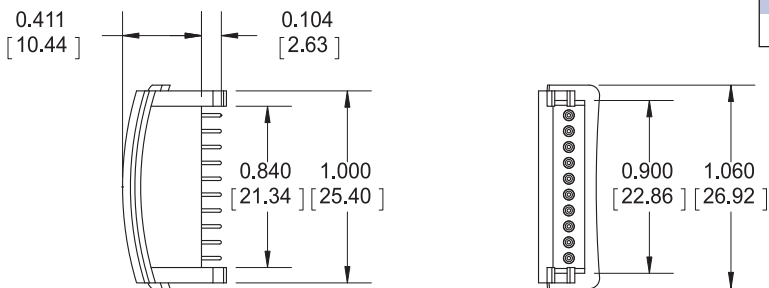
	Part Number
<b>Plug (Solder Cups)</b>	KS10/210APMST
<b>Receptacle (Surface Mount)</b>	KS10/210AEFDTABH

### Connector Dimensions

#### Single Row Solder Cup Male Plug

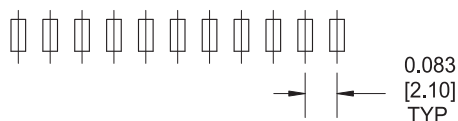
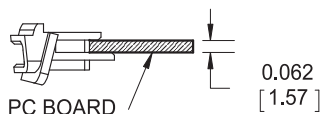


#### Single Row Surface Mount Female Receptacle



### Mounting Dimensions

#### Single Row Receptacle



Dimensions are in inches [mm]