

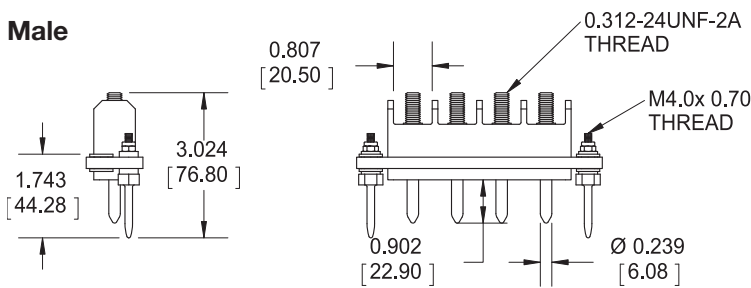


Single Row, Rack and Panel Connectors - 200 Amp Contacts

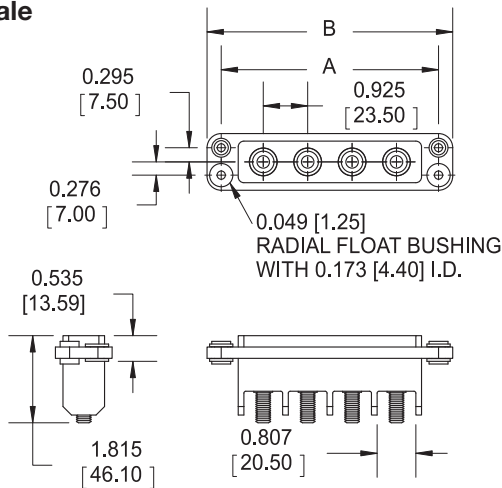
- 200 Amps per contact
- 1 to 6 contacts
- Very low mating forces
- Radial float 0.049 [1.25]
- Threaded terminals
- One row 0.925 [23.50] centers
- 0.241 [6.12] contacts
- Blind mate capability

Connector Dimensions

Male

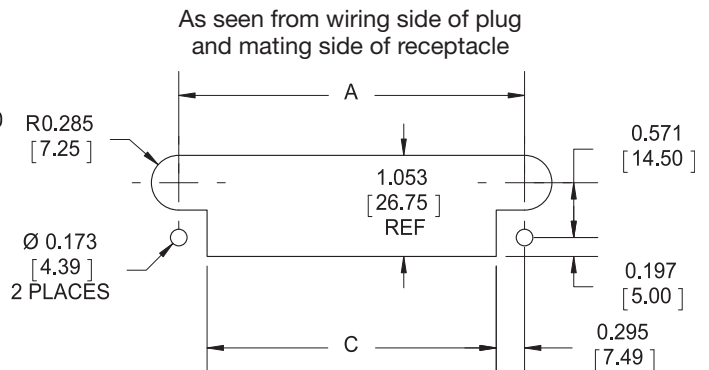


Female



Number of Contacts	A	B	C
1	1.752 [44.50]	2.342 [59.50]	1.161 [29.50]
2	2.677 [68.00]	3.268 [83.00]	2.087 [53.00]
3	3.602 [91.50]	4.193 [106.50]	3.012 [76.50]
4	4.520 [114.80]	5.118 [130.00]	3.937 [100.00]
5	5.453 [138.50]	6.043 [153.50]	4.834 [123.00]
6	6.378 [162.00]	6.969 [177.00]	5.787 [147.00]

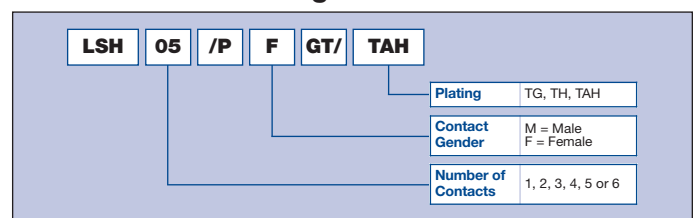
Mounting Dimensions



General Specifications

Contact Diameter	0.241 [6.12]
Current Rating	200 Amps per contact
Resistance	< 0.10 milliohms
Extraction Force	80 – 160 oz. max. per contact
Contact Life Cycles	100,000
Breakdown Voltage	4,000V RMS
Dielectric Withstanding Voltage	3,000V RMS
Insulation Resistance	> 10 ⁶ megohms at 500 VDC
Temperature Rating	-55° C to 125° C
Insulator	Polyphenylene sulfide (PPS)
Contact	Material: Pin: Copper Socket: Beryllium copper wires, brass and copper body Plating: Gold over nickel
Plating Reference	TG = 10µin gold (min) over nickel TH = 50µin gold (min) over nickel TAH = 50µin gold (min) over nickel on mating surface, gold flash over nickel on termination

Ordering Information



Dimensions are in inches [mm]